

COVID- 19 HANDLING & USE OF PERSONAL PROTECTIVE EQUIPMENT & CLOTH FACE COVERINGS

This guidance by the Florida Network is made in response to the current health emergency and is in coordination with the Department of Juvenile Justice and Office of Health Services.

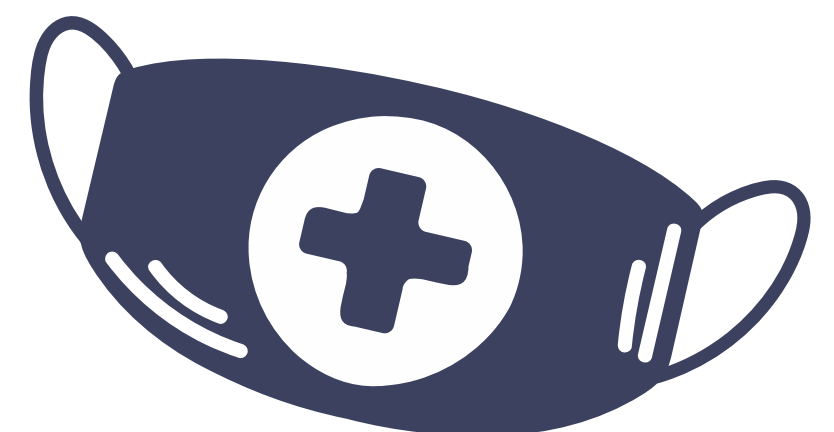
Definitions

- **Close contact**: when a individual is within approximately six feet for a prolonged period of time with someone who is positive for COVID-19 or is awaiting test results for COVID-19.
- **CFC**: Cloth Face Coverings made for daily use by staff in routine performance of their duties and youth while in care.
- **Isolation**: The separation of individual youth who have tested positive for COVID-19 from others within the facility that are not sick.
- **Quarantine**: The separation and/or restriction of movement of individuals within the facility who may have been exposed to the COVID-19 virus until it is determined if they are infected with the virus.

Directions for use of Cloth Face Coverings (CFC), Surgical Masks (exam masks), N-95 Masks, Gloves and full PPE are outlined below:

CFC

- Staff working within the secure perimeters performing routine duties.
- Youth in care



Surgical Mask (exam masks) or CFC and Gloves

- Supervising youth in secure medical isolation (and not quarantine) without routine contact within six feet of those youth.
- Transporting asymptomatic youth that are not COVID-19 positive and not presumed positive
- Surgical masks used shall be discarded with other medical waste at the end of every shift prior to exiting the facility.

N-95 (or KN-95 or FFP2) Respirator Mask and Gloves for both staff and youth

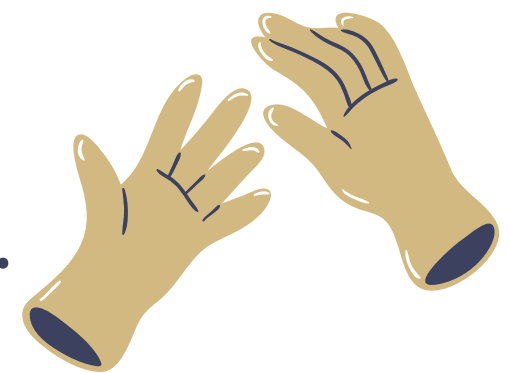
- Supervising youth in medical isolation who are pending medical clearance
- Transporting symptomatic, presumed positive, or positive COVID-19 youth
- N-95 masks may be reused with proper handling. These masks will be discarded at the end of the shift where close contact occurred or if they become contaminated with body fluids.
- N-95 Masks shall only be used in these situations and those ordered specifically by the Designated Health Authority

Full PPE (N-95 Mask, Gloves, Eye protection and Gown)

- While in close contact with youth in medical isolation
- Discard mask with medical waste if exposed to respiratory aerosols of youth who are positive or presumed positive for COVID-19.
- Full PPE shall only be used in these situations and those ordered specifically by the Designated Health Authority.

Important Notes

- CFCs and Personal Medical-grade masks are authorized for staff.
- CFCs do not take the place of PPE when required.
- CFCs that are hand-made must comply with the recommendations of the Centers for Disease Control for such coverings.
- Any masks, CFCs other PPEs supplied by the Network is intended for use solely within Florida Network contracted providers.



Care of Cloth Facial Covering (CFC)

- When putting on and removing mask, grasp the ties/band or ear loops. Do not touch the inside or outside of the mask.
- Adjust the nose piece (when applicable) to attain a secure fit against your nose and face.
- Do not touch face, eyes, or nose when putting on or wearing face covering.
- Before and after touching or adjusting your mask, clean hands with soap and water or an alcohol-based hand sanitizer.
- Minimize touching the mask.



Care of N-95:

- Discard mask if contaminated with respiratory secretions or other body fluids or is otherwise visibly soiled.
- Store between use in a clean, breathable container such as a paper bag.
- Label containers used for storing the mask with the user's name to reduce accidental usage of another person's mask.
- Masks will be replaced every 5 uses unless contaminated as noted above.
- Do not attempt to wash these masks and do not apply disinfectants or alcohol to them.